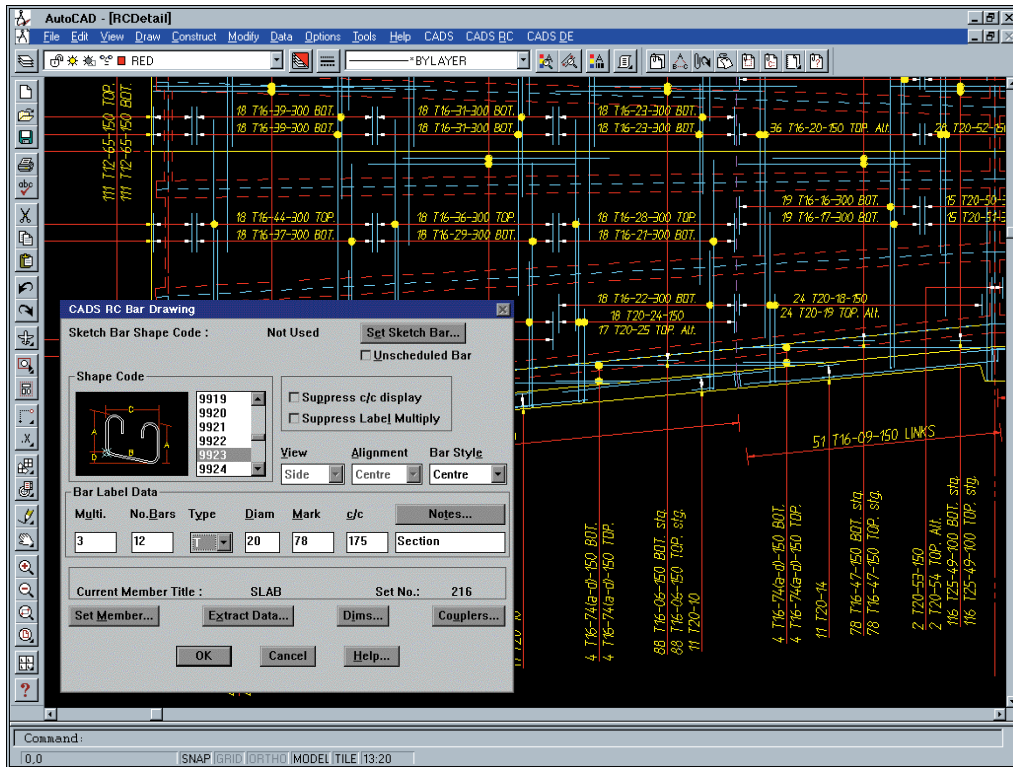


# CADS RC v8 for AutoCAD

R14/2000/ADT



## Principal Features

- **Bar schedules to BS 4066 & BS 8666**  
 As each set of bars is detailed, CADS RC adds them to the internal schedule database automatically.
- **Powerful editing features**  
 CADS RC provides unique stretching and editing functionality which makes easy work of drawing changes and re-use of existing details.
- **Reduced errors**  
 All new bar sets and changes are instantly added to the bar bending schedule which means that checking is reduced and errors virtually eliminated.
- **Automatic RC detailing macros**  
 Stairs, pilecaps (2-9 piles including triangular), pad footings, beams, columns and octagonal bases.
- **Easy to use**  
 As an integrated AutoCAD application, CADS RC adds functionality to your AutoCAD system and is supported by quality user manuals and training.
- **Links from RC design software**  
 The results from design programs for beams, pilecaps, columns, bases, etc, can be imported into CADS RC for instant detailing and scheduling. Such details can also be easily amended with CADS RC, as required.
- **Industry standard solution**  
 For over ten years CADS RC has been the market leading RC detailing software in the UK and around the world. With versions for international markets, including the USA, India and Canada, CADS RC has a proven track record worldwide.
- **Links to Rebar fabrication systems**  
 CADS RC is also widely used by Rebar fabricators. The CADS bar bending schedule links directly to production software and machinery, including KRB, aSa, Soulé & RMS, for maximum productivity.
- **Configuration and customisation**  
 CADS RC's success is due to its advanced detailing features and technical excellence. CADS strive to accommodate users' requirements and detailing styles, which means that the software is easily configured to suit the needs of any customer.



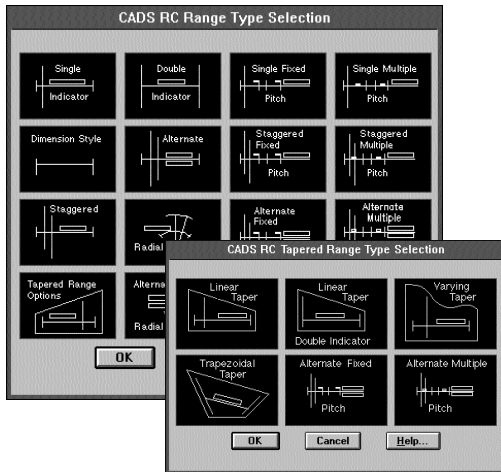
Computer and Design Services Ltd  
 Arrowsmith Court, Broadstone  
 Dorset, BH18 8AX, England, UK  
 Telephone: +44 (0) 1202 603031  
 Facsimile: +44 (0) 1202 658549  
 Email address: sales@cad.s.co.uk  
 Web site: http://www.cads.co.uk



### Bar drawing functionality

CADS RC can detail anything and has been successfully used on all sorts of building, major bridge, water treatment, process and power projects.

CADS RC's detailing features include an extensive selection of bar ranges to suit every situation. Whether you are detailing a flat slab, circular tank, bridge deck or abutment, you will find a detailing facility in CADS RC to meet your needs.

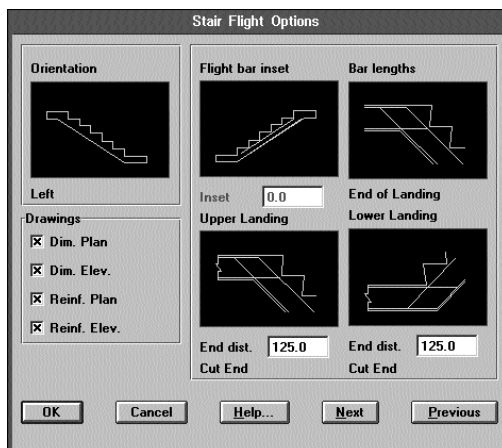


**Shape Code 99's** - CADS RC comes complete with over 30 pre-defined SC-99's which, based upon feedback from major consulting engineers, cover the majority of requirements. For shapes that are not included in the standard list there is a 'user-definable SC-99' facility.

**Couplers** - CADS have established a good working relationship with manufacturers of reinforcement couplers and CADS RC supports Ancon CCL, MacAlloy MSP, Lenton and other leading ranges.

### RC Detailing Macros

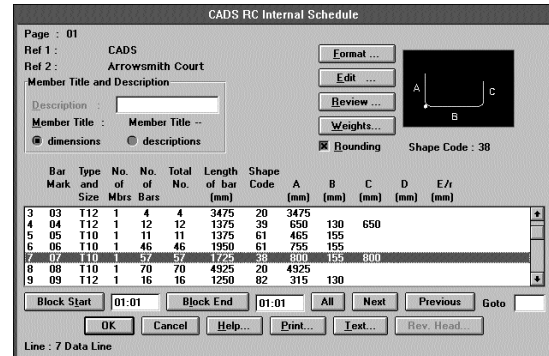
CADS RC Detailing Macros are available for stair flights, pilecaps (2-9 pile layouts), pad footings and octagonal bases. Users are able to describe their structure by entering values for given parameters into the program.



When the data is complete, a detail is drawn, labelled and scheduled in a matter of a few seconds. Such details can also be amended later with CADS RC's extensive reinforcement editing tools.

### Bar schedules to BS 4066 & BS 8666

Perhaps the single most impressive aspect of CADS RC is the automatic on-line bar scheduling. Whatever the status of the drawing, CADS RC keeps the bar bending schedule up-to-date, correct and available to be

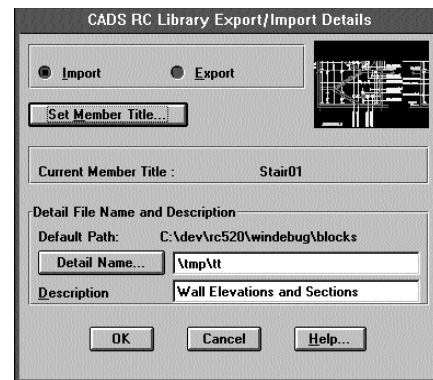


viewed on-screen at any time. Schedules can be sorted and compacted to a minimum number of pages. Users may customise their printed forms to include a company logo and other layout features that may be unique to their organisation.

**Schedule and Drawing Revisions** - A comprehensive revision handling facility for the civil, structural and process industries is also provided as standard.

### CADS RC Detail Library and Editing

Many reinforcement details are similar but distinctly different and like the AutoCAD WBlock command, the CADS RC Library allows users to save such details for



re-use later. When an existing detail is required again, users simply browse the RC Library to find what they want and insert it into the drawing.

**RC Editing Capability** - CADS RC provides detailers with a unique facility to edit details quickly and easily, thus optimising the re-use of existing information. All changes to the drawing are immediately reflected in the on-line bar bending schedule and all bar labels, sections etc, are also updated automatically.

### Quality Assurance

CADS RC maintains a reinforcement database that always reflects exactly what is on the drawing. Extra safeguards are provided by a series of 'RC-Audits' that detect unlabelled bars or incomplete bar sets. CADS RC drawings require less manual checking, thus scheduling errors are virtually a thing of the past!