

### Intuitive Design Modeling in V8i

With V8i's intuitive design modeling tools, project teams can easily take designs from concept to completion in the same software environment.

- Conceptual design tools make it easier to intuitively sculpt solids and surfaces.
- [GenerativeComponents](#) makes it easy to iterate through design alternatives.

Together, these design modeling tools help teams

- Increase design productivity.
- Improve information quality.
- Reduce project rework.

Working in the same software environment means

- Fewer information-translation obstacles.
- Seamless transition from design modeling to visualization.
- More time to spend creating designs rather than reworking them.

### From a User's Perspective

"The ability to **create 3D model forms** in V8i during very early design phases using basic solid entities, and then tune them using the 'modify solid entity' tool, is a great step ahead. Using this and other tools in 3D is quite **easy and intuitive with V8i**. You can **push and pull faces**, divide them into smaller parts by adding new edges using the "draw on solid" tool, and manipulate edges and even individual vertices.

This way, a user can **easily identify design problems** from various points of view in very early stages and can adjust the model accordingly. Of course, all of these tools can be **used with Dynamic Views**, to create presentations that incorporate plans, sections, elevations and more from the existing 3D model.

The important part of conceptual modeling in V8i is also the presentation of the 3D model, especially in the early stages. **I use the 'illustration mode'** and 'illustration with shadows,' and these provide very nice visual feedback to the client or co-workers. As usual, in MicroStation V8i, the **new display styles are fully customizable** and allow a user to 'tune' them.

I also really like the tools that **manipulate mesh elements**. The most important thing in the 360 design is the new automated coordinate system, or ACS, which allows a user to **use a different ACS in different views**. This is very useful, especially in non-orthogonal models.

I would also like to point out the enhancements for working with reference files in V8i. The ability to **activate a reference file, edit it, and then deactivate** to get back to an active file is a **great time saver**. I use it almost daily.

Last but not least, I like the ability to **import .3dm, .skp, .obj, and .3ds files**."

- Peter Tezga, architect, REPRESX, Slovakia, offering design-build services for industrial, commercial and office buildings



### Iterative Luxology Rendering in V8i

Speeding design visualization in MicroStation V8i is the new Luxology rendering engine. Incorporated in MicroStation and all MicroStation-based applications, this rendering engine provides near-real-time rendering inside your favorite design application.

This super-fast Luxology rendering engine will

- Save you time and enable you to render more images.
- Improve the quality of rendered images for stakeholder review and buy-in.
- Make it easier to deliver TV- and film-quality renderings from 3D models.

Working in the same MicroStation environment that you use to build 3D models means you will

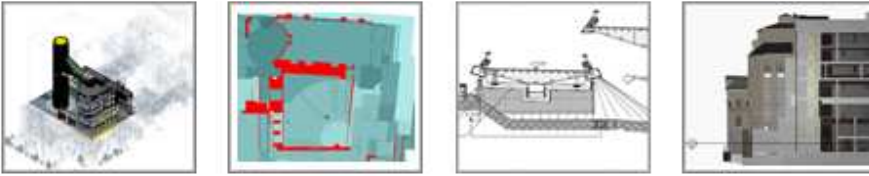
- Eliminate translations between model creation and visualization environments.
- Enjoy seamless transition for design modeling and visualization to workflows.
- Spend more time creating designs and less time reworking them.

[View the MicroStation V8i Users' Luxology Gallery](#)

### From a User's Perspective

"**Saving time and working faster** is really what it's all about; MicroStation V8i makes it easy. We will be able to get high quality renderings from our MicroStation models now that the **Luxology rendering engine** is now included with MicroStation V8i. If we can do it all from within one package, **it's a definite plus for us**. There's no better way of working.

*- Stuart Willows, Wm Saunders Partnership LLP, Newark, United Kingdom, a multi-disciplinary practice of architects, interior designers, project managers, structural and civil engineers, quantity surveyors, building surveyors, and CDM coordinators.*



### Interactive Dynamic Views in V8i

With interactive dynamic views, MicroStation V8i leapfrogs competing software. Users can work in 2D or 3D views and see both update dynamically. With interactive dynamic views, users can

- Save time coordinating plan sets.
- Improve the quality of deliverables.
- Simplify the 3D modeling experience.

Working in 3D is easier because users can

- Slice through 3D models .
- Remove clutter from the working view.
- See only what's needed in any view at any time.

Also, interactive dynamic views automate 2D updates for full drawing package coordination. This means that teams can

- Quickly improve the quality of integrated documentation packages.
- Reduce the time spent creating 3D models.
- Spend less time preparing and coordinating 2D documentation.

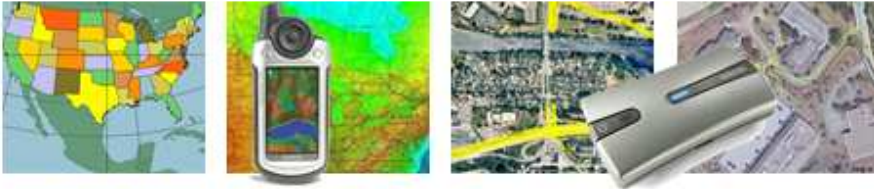
### From a User's Perspective

"While MicroStation V8i promises many great new features, **we are most excited about dynamic views.**

In addition to producing 2D documents that are **live representations** of our 3D building information models, the ability to interactively define sections through our BIM models while symbolizing the information uniquely in different areas with display styles will enable us to visualize our designs in ways that we haven't been able to conceptualize before.

Kudos to Bentley for **making 3D design more interactive** and more informative."

- Tim Grimm, LMN Architects, a full-service architecture firm, Seattle, Washington



### Intrinsic Geo-coordination in V8i

MicroStation V8i's intrinsic geo-coordination lets users coordinate information spatially from many sources using common coordinate systems.

Users can locate files spatially with real-world context in ProjectWise for content management or in Google Earth for visual review. This enables V8i users to

- Save time coordinating data from various sources.
- Improve information quality.
- Reduce the risk of errors on site caused by poorly coordinated data.

MicroStation V8i delivers an approach to geo-coordination that fully embraces all types of GIS and AEC information for broad reuse by all project stakeholders.

MicroStation V8i lets infrastructure professionals

- Synchronize and coordinate true and projected coordinate systems.
- Use a single interpretation system for universal reference sources.

### From a User's Perspective

"We have 12 districts in the Kentucky Transportation Cabinet that are located all across the state. Most of our users' data is local, but they often have to share information with the central office. **Geo-coordination is something that may really help us.**

If there's no coordinate system applied to a file, or perhaps there are two separate projects that we're trying to align that have two different coordinate systems, we have to find ways to reproject or transform that data so that they line up.

**MicroStation V8i can help us coordinate our geospatial information from various sources in an integrated environment."**

*- Jeremy Gould, geoprocessing specialist, Kentucky Transportation Cabinet, overseeing Kentucky's state highway and transportation system*